

HOW TO USE THIS TEMPLATE

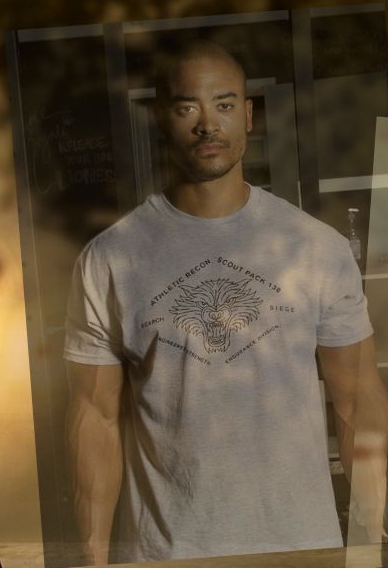
Welcome to StudioBinder's [Show Pitch Bible](#) template! First, go to [File](#) > [Make a copy](#) to add this to your Drive. Use this as a pitch presentation, as well as a show bible. Each section is fully customizable for your concept.

1. Make sure you see our notes by going to [View](#) > [Show Speaker Notes](#)
2. Replace the sample text with your own.
3. Swap out images by right-clicking them and selecting "[Replace Image](#)"

We hope you enjoy this template. Good luck, and break a lens!

Strong Coffee

PITCH BIBLE



LOGLINE

Two brothers, who were unaware of each other's existence, are thrown into each other's lives when their Grandfather dies and leaves them his rural mountain homestead along with his extensive stash of coffee that produces mysterious side effects.

SYNOPSIS

Reinhold Strong lived as a recluse in Martin's Knoll at the foot of Strong Mountain for over thirty years. But now he is dead and his only living blood relatives have been summoned to hear his will. Vernon and Lyndon Strong didn't know who their Grandfather was let alone that they are brothers who share the same father whom neither have met. Reinhold left his grandsons his home, property and an oddly large amount of coffee beans. Vernon wants to sell and get on with life. Lyndon wants to finally have a home. When they realize grandpa's coffee beans are - well, special, they decide to stay. If they can keep from killing each other perhaps they'll find what they're both really looking for and help some neighbors along the way.

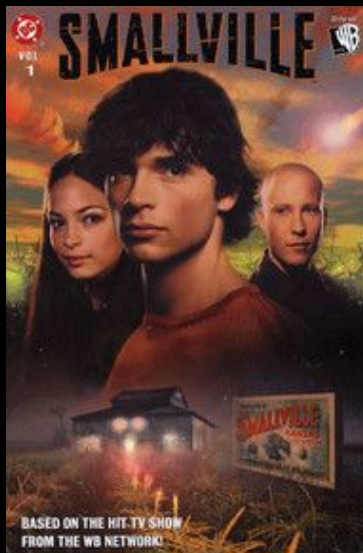


SHOW CROSS

The Odd Couple



Smallville



Supernatural



MEETS

MEETS

Vernon Hessler-Stro

MAIN CHARACTER

Vernon grew up in the town of Salisbury, NC. His mother, Anne, refused to speak of his father. He had wanted to go for a college degree in biology but his mother insisted he have nothing to do with anything science related so he majored in mathematics. He was living hand to mouth working for a small fledgling accounting firm in Charlotte, NC when he was summoned to hear the will of Reinhold Strong. He hoped he may be getting some money but instead he finds out that he has a brother who shares an inheritance of a run down homestead in Martin's Knoll.





Lyndon Bernard-Strong

MAIN CHARACTER

Lyndon

Harlan Steinbeck

MAIN CHARACTER

Harlan Steinbeck is one of the most powerful businessmen in Martin's Knoll. But getting to that place was not easy. He grew up in Martin's Knoll as part of his poverty stricken family, the Reeses, who were despised on account of their rural country ways and moonshine business. As an adult he reinvented himself and changed his name to Steinbeck. He grew his real estate company by letting nothing or no one stand in his way. He doesn't care who gets hurt as long as he lands the deal. And now he's after Vernon and Lyndon's inheritance.





Denise Steinbeck

MAIN CHARACTER

When Denise Steinbeck left for college she was not on good terms with her father. His ruthlessness in business was the main reason she went to school out of state. But she has recently returned home after graduating with an MBA because her father has convinced her that he needs her help running his real estate company, but more importantly to Denise, that he has had a change of heart. She sees this new position in his company as a chance to reconcile with her father and make a difference in the community of Martin's Knoll.

PILOT

Westworld is a technologically-advanced Western-based theme park, where guests can engage with the lifelike android "hosts" in complex narratives. Humans can interact with hosts however they desire, including violent and sexual acts, without retribution as the hosts are programmed not to harm living things and restart each day anew without memories of past events.

Host Dolores visits Sweetwater and meets Teddy, who has just arrived in the town.

The two spend time rekindling a past romance. She brings Teddy back to the farmstead and hear gunshots coming from the house. Two bandits banter about her mother being raped and murdered, and her father still alive but shot before Teddy arrives.

Teddy kills two of them, Walter and Rebus, but finds himself unable to kill their leader, the Man in Black.

The Man in Black reveals he is a guest, and after killing Teddy, who is revealed to be a host, drags a struggling Dolores to the barn, upset that she does not remember him after thirty years of his visits. The next day, the sheriff host starts to malfunction.

The park staff bring him to their operations center and find that the recent "Reveries" update, developed by the park's creator Robert Ford and applied to some of the hosts, is at fault, but lead programmer Bernard suggests they monitor those hosts to better diagnose the problem.

EPISODE CONCEPTS

EPISODE 1: "THE ORIGINAL"

"The Original" introduces the eponymous Western-themed amusement park from the perspectives of both the androids and the humans. It received positive reviews from critics.

EPISODE 2: "CHESTNUT"

First-time guest William and repeat visitor Logan, arrive at Westworld with different expectations and agendas.

EPISODE 3: "THE STRAY"

Teddy Flood gets a new backstory, which sets him off in pursuit of a new villain, leaving Dolores Abernathy alone in Sweetwater.

EPISODE 4: "DISSONANCE THEORY"

Dolores joins William and Logan on a bounty hunt in the badlands. Dr. Ford and Theresa discuss the future of the park.

EPISODE 5: "CONTRAPASSO"

A perilous mission awaits Dolores, William and Logan once they arrive in the amoral town of Pariah. Meanwhile, the Man in Black finds an improbable partner in his crusade.

EPISODE 6: "THE ADVERSARY"

We see Maeve waking in bed, just as Dolores does on her continuous loop. She dresses and goes to work in the Mariposa Saloon..

EPISODE 7: "TROMPE L'OEIL"

Dolores and William journey into treacherous terrain; Maeve delivers an ultimatum; Bernard considers his next move..

EPISODE 8: "TRACE DECAY"

Bernard struggles with a mandate; Maeve looks to change her script; Teddy is jarred by dark memories.

FUTURE SEASONS

SEASON 1

A dark odyssey about the dawn of artificial consciousness and the future of sin.

SEASON 2

We don't like to endlessly build mystery; we like to settle our debts by the end of the season. We want to feel like the show is rocketing ahead. The first season was a journey inward; this is a journey outward. It's a search for what else is in the park, and what else is beyond the park

SEASON 3

The main focus of the season will be the "real world" that Dolores, Bernard, and the host-version of Charlotte Hale have arrived in.



TONE

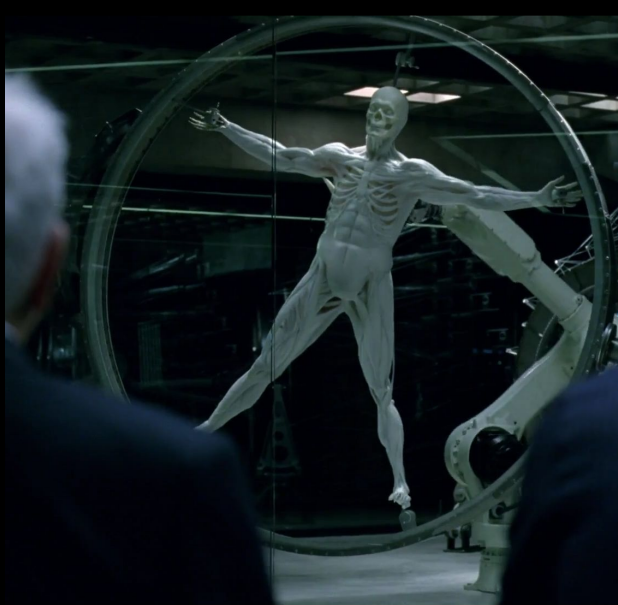
The series is a dark odyssey about the dawn of artificial consciousness and the evolution of sin.

Set at the intersection of the near future and the re-imagined past, it explores a world in which every human appetite, no matter how noble or depraved, can be indulged.

It will have visual styles of "RoboCop" and "Star Wars"



THE WORLD





THE WORLD



Westworld

E: [your email address]

P: [xxx-xxx-xxxx]

Social: @yourhandle